

UNITED STATES PUBLIC LAND SURVEY CORNER CERTIFICATE FOR

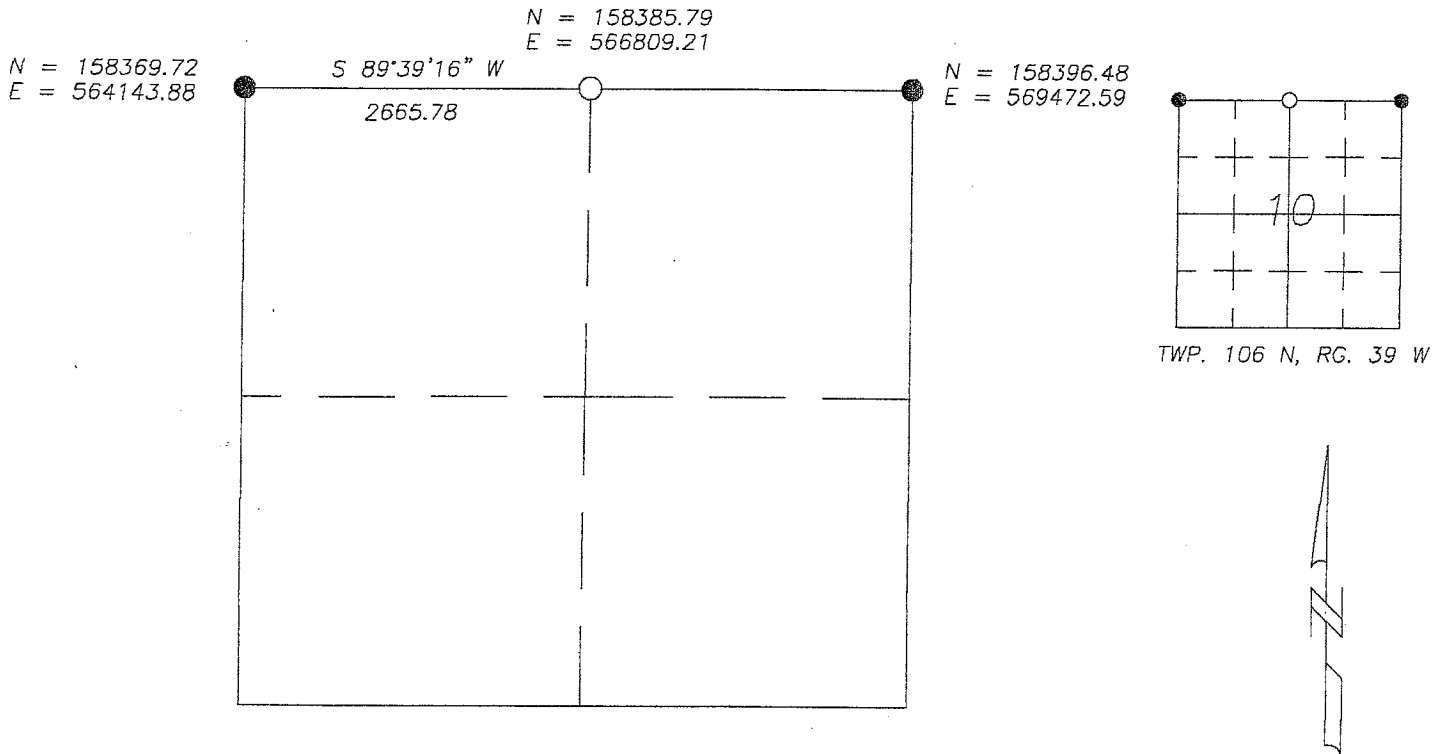
Land survey monuments situated in Section 10, Township 106 North, Range 39 West, of the Fifth Principal Meridian, Murray County, Minnesota..

Previously recorded in N/A in County Recorder's Office.

(Show reason for preparing this certificate, the evidence and detailed procedure used in establishing the corner position & monumentation found or placed.)

MONUMENT DESCRIPTION AND REMARKS: On October 12, 2012 we dug with backhoe for North 1/4 Corner & found a 8" X 10" stone 1.4' below surface at centerline road in line with fence South. I accepted stone as corner & set a 5/8" Iron Stake with survey cap 23008 over top center of stone. County Highway records indicated no information for corner.

MURRAY COUNTY COORDINATES NAD-83, 2007 **PLAN-VIEW**



I hereby certify that this land surveying document was prepared and related survey work was performed by me or under my direct supervision and that I am a duly licensed Land Surveyor under the laws of the State of Minnesota.

Perry L. Zieske 12-17-12
 Signature Date
 Perry Zieske
 License number 23008

Corners to be Indexed

Corners	Section	Township	Range
N 1/4	10	106	39